

SCHEDA TECNICA – PILE TASK

COD. HH165

ROSSINI.
TECH

CE

1° categoria per
rischi minimi



TESSUTO

100% poliestere

Peso 280 g/m²

DESCRIZIONE

Pile con collo alto con zip centrale aperta fino al fondo.

Un taschino a filetto al petto destro con chiusura con zip verticale, due tasche inferiori interne chiuse con zip, polsi e girovita con bordo di colore a contrasto in tutte le varianti tranne 02-bianco e 05-nero.

TAGLIE

XS, S, M, L, XL, XXL, XXXL, 4XL, 5XL

Dalla S solo per 02-bianco, 05-nero, 12-grigio



01 – BLU



05 – NERO



06 – AZZURRO ROYAL



02 – BIANCO



07 – ROSSO



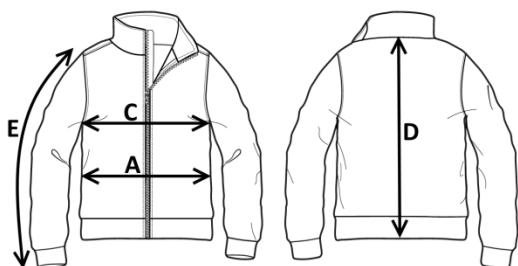
12 – GRIGIO



07 – ROSSO



Il margine di tolleranza produttivo, nel rispetto delle dimensioni della taglia, può essere del +/- 3%



SIZE - cm	XS	S	M	L	XL	XXL	XXXL	4XL	5XL
C – ½ CIRCONFERENZA TORACE	51	54	57	60	63	66	69	73	77
A – ½ CIRCONFERENZA VITA	48	51	54	57	60	63	66	70	74
D – LUNGHEZZA CENTRO DIETRO	64	66	68	70	72	74	76	78	80
E – LUNGHEZZA MANICA	62	64	66	68	70	72	74	76	78

 **TECHNICAL SHEET – TASK FLEECE**
CODE HH165

rossini.
TECH



1ST CATEGORY
FOR MINIMUM RISKS



07 – RED



FABRIC

100% polyester
Weight 280 g/m²

DESCRIPTION

High collar fleece with central zip opening down to the bottom.
One welt breast pocket on the right with vertical zip closure, two lower welt pockets with zip closure, cuff and waistband with contrasting colour border in all variants except from 02-white and 05-black.

SIZES

XS, S, M, L, XL, XXL, XXXL, 4XL, 5XL
From size S only for 02-white, 05-black, 12-grey



01 – BLUE



05 – BLACK



06 – ROYAL BLUE



02 – WHITE

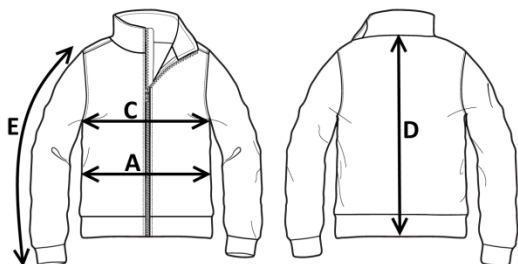


07 – RED



12 – GREY

Measurements may vary +/- 3%, tolerance within size scale



SIZE - cm	XS	S	M	L	XL	XXL	XXXL	4XL	5XL
C – ½ CHEST CIRCUMFERENCE	51	54	57	60	63	66	69	73	77
A – ½ WAIST CIRCUMFERENCE	48	51	54	57	60	63	66	70	74
D – CENTER BACK LENGTH	64	66	68	70	72	74	76	78	80
E – SLEEVE LENGTH	62	64	66	68	70	72	74	76	78

 **FICHA TÉCNICA – FORRO POLAR TASK**
CÓD. HH165

ROSSINI.
TECH

CE

1ª categoría
para riesgos mínimos



COMPOSICIÓN

100% poliéster
Peso 280 g/m²

DESCRIPCIÓN

Forro polar con cuello alto y cremallera en el centro abierta hasta abajo.
Un bolsillo de ojal a la derecha del pecho cerrado con cremallera vertical, dos bolsillos internos en la parte inferior cerrados con cremallera, puños y circunferencia de la cintura de color contrastante en todas las variantes excepto 02-blanco y 05-negro.

TALLAS

XS, S, M, L, XL, XXL, XXXL, 4XL, 5XL

De la S solo para 02 – blanco, 05 – negro,
12 – gris



01 – AZUL



05 – NEGRO



06 – AZUL REAL



02 – BLANCO



07 – ROJO



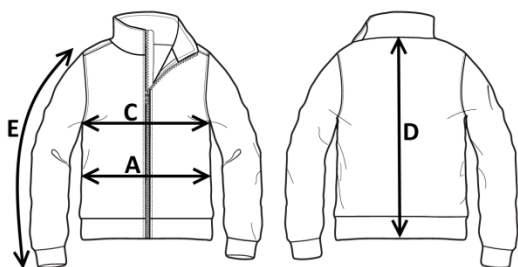
12 – GRS



07 – ROJO



El margen de tolerancia productiva, respetando las dimensiones de la talla, puede ser de +/- 3%



SIZE - cm	XS	S	M	L	XL	XXL	XXXL	4XL	5XL
C – ½ CIRCUNFERENCIA TORÁCICA	51	54	57	60	63	66	69	73	77
A – ½ CIRCUNFERENCIA DE LA CINTURA	48	51	54	57	60	63	66	70	74
D – LONGITUD CENTRAL ESPALDA	64	66	68	70	72	74	76	78	80
E – LONGITUD DE LA MANGA	62	64	66	68	70	72	74	76	78



MATERIAL

100% poliester

Greutate 280 g/m²

DESCRIERE

Polar cu guler înalt cu fermoar central deschis complet.

Un buzunar pe piept cu închidere cu fermoar vertical, două buzunare inferioare interioare închise cu fermoar, manșete și talie cu bandă în culoare contrastantă în toate variantele cu excepția 02-alb y 05-negru.

MĂRIMI

XS, S, M, L, XL, XXL, XXXL, 4XL, 5XL

De la S doar pentru 02-alb, 05-negru, 12-gri



01 – BLEUMARIN



05 – NEGRU



06 – ALBASTRU REGAL



02 – ALB



07 – ROȘU



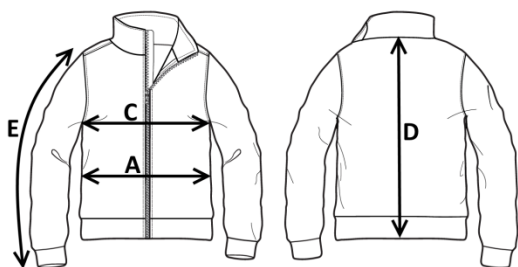
12 – GRI



07 – ROȘU



Marja de toleranță a producției, respectând dimensiunile mărimii, poate fi de +/-3%.



SIZE - cm	XS	S	M	L	XL	XXL	XXXL	4XL	5XL
C – ½ CIRCUMFERINȚĂ TORACE	51	54	57	60	63	66	69	73	77
A – ½ CIRCUMFERINȚĂ TALIE	48	51	54	57	60	63	66	70	74
D – LUNGIME SPATE	64	66	68	70	72	74	76	78	80
E – LUNGIME MÂNECĂ	62	64	66	68	70	72	74	76	78

FICHE TECHNIQUE – POLAIRE TASK
CODE HH165

ROSSINI.
TECH



TISSU

100% polyester
Poids 280 g/m²

DESCRIPTION

Polaire à col haut avec fermeture Éclair centrale ouverte jusqu'au bas.
Une poche passepoilée sur la poitrine droite fermée par une fermeture Éclair verticale, deux poches inférieures internes fermées par une fermeture Éclair, poignets et taille avec bordure de couleur contrastante dans toutes les variantes sauf que le 02-blanc et le 05-noir.

TAILLES

XS, S, M, L, XL, XXL, XXXL, 4XL, 5XL

A partir de la taille S uniquement pour 02-blanc, 05-noir, 12-gris



I catégorie pour les risques minimaux



01 – BLEU



05 – NOIR



06 – BLEU CLAIR ROYAL



02 – BLANC



07 – ROUGE



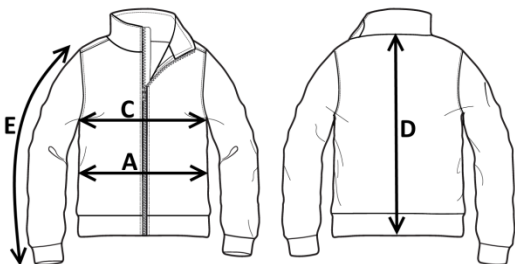
12 – GRIS



07 – ROUGE



La marge de tolérance de production, dans le respect des dimensions de la taille, peut être de +/- 3 %



SIZE - cm	XS	S	M	L	XL	XXL	XXXL	4XL	5XL
C – ½ TOUR DE POITRINE	51	54	57	60	63	66	69	73	77
A – ½ TOUR DE TAILLE	48	51	54	57	60	63	66	70	74
D – LONGUEUR CENTRE ARRIERE	64	66	68	70	72	74	76	78	80
E – LONGUEUR MANCHE	62	64	66	68	70	72	74	76	78